

BAYOU SORREL LOCK REPLACEMENT STUDY

INLAND WATERWAYS USERS BOARD MEETING 103

COL Cullen Jones
Commander, New Orleans District
U.S. Army Corps of Engineers
August 2024

*World-Class Delivery...
Real-World Impact!*



US Army Corps
of Engineers®





U.S. ARMY

BAYOU SORREL LOCK REPLACEMENT STUDY - BLUF

2



STUDY GOAL:

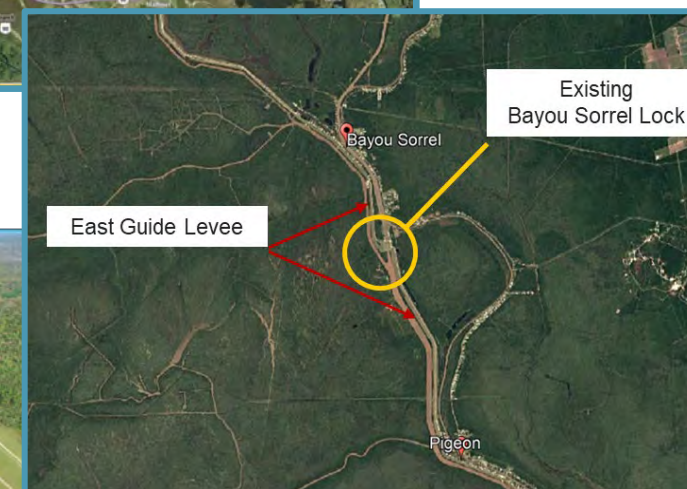
Identify a Recommend Plan for an economically justified project to address both Navigation and Flood Risk Management objectives.

GOOD NEWS!

Received \$800,000 from FY24 Congressional Directed Spending (i.e. Earmark) for a resumption of study for replacement of the existing lock.

Opportunity to Reassess Lock Replacement Based on Current Data:

- Reexamine previous analyses
- Reevaluate existing alternatives and potentially develop new options
- Integrate up-to-date navigation traffic data
- Update cost estimates to achieve Level III cost certification



Significance: Lock serves as integral part of navigation along the Gulf Intracoastal Waterway the #3 waterway in the nation, and provides flood risk management for the Atchafalaya Basin



U.S. ARMY

BAYOU SORREL LOCK REPLACEMENT STUDY

3



Initiate Study Summer 2024

Scoping Fall/Winter 2024

Alternatives Evaluation

Feasibility Level Analysis

Director's Report

\$800k in FY24
Research available data
Develop Scope, Schedule,
and Budget

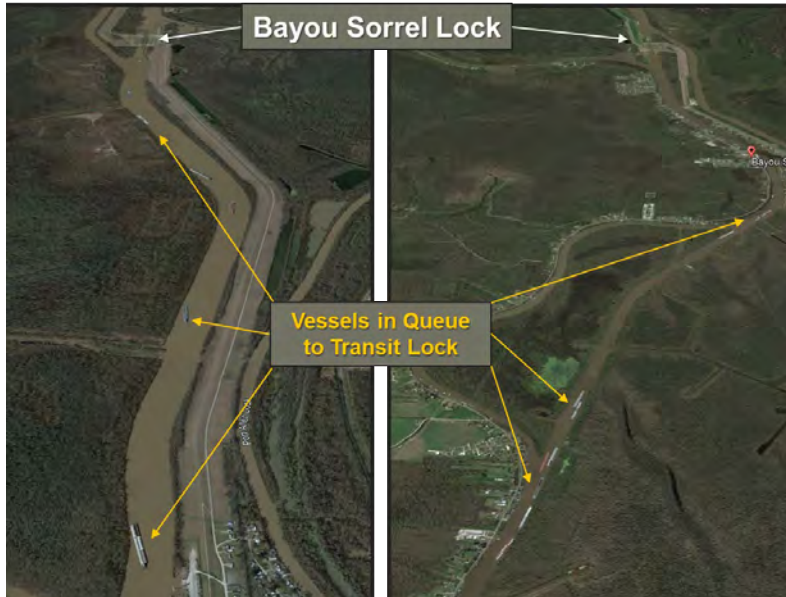
Public Scoping Meetings
Develop Array of
alternatives
Jan 2025 Alternatives
Milestone (AMM)

JAN 2026 Tentatively
Selected Plan

Jul 2026 Agency
Decision Milestone

Sep 2027 – Signed
Director's Report

Focus of the next 6 months. As we approach AMM there may be opportunities to reduce the schedule based on the previous analysis and available data.



Opportunity to relook at Lock Performance Monitoring System (LPMS) data to accurately reflect observed delay times.



Previous Study Efforts

2005

Chief's Report Recommended Replacement of the lock

2006

Preliminary Design indicated significant cost increase

2007

WRDA authorized lock replacement

2010

Initiated Post Authorization Change Report (PACR)

2013

PACR revealed significant cost growth and reduced economic benefit

Conclusion: Recommendation to forgo the lock replacement for navigation purposes and conduct further analysis for flood risk management under the Mississippi River and Tributaries program.

QUESTIONS AND DISCUSSION

Additional Points of Contact at New Orleans District

Chief, Projects and Restoration Branch: Jennifer Vititoe Jennifer.M.Vititoe@usace.army.mil

Project Manager: Ryan Neumann Ryan.A.Neumann@usace.army.mil



US Army Corps
of Engineers®

U.S. ARMY